

EMERGENCY TOOL TO REPLACE W9 MEMBRANE

ART. NO. 800077

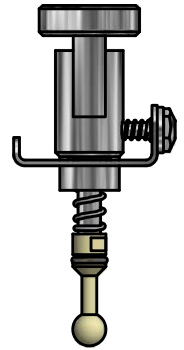
GENERAL

The KEOFIT Emergency Tool is a tool for replacing Silicone and EPDM membranes on W9 valves with unique serial no.. It is NOT suitable for PTFE membranes.

ONLY IN CASE OF EMERGENCY!

KEOFIT highly recommend to read the Quick Guide before using the tool. It takes trained personnel to perform the task. KEOFIT cannot be held liable if the equipment fails or the staff does not perform the task properly.

Take precautions when handling hot product!



FEATURES

Installation: W9 valves - ONLY on valve bodies with Hose Piece.

Operation: Please refer to the Quick Guide.

CERTIFICATION*

- EU EC 1935/2004 · EU EC 2023/2006 · EU EC 10/2011 · DK No. 1248 10/2018
- FDA CFR 21 §177.2415 · Keofitt DoC

TECHNICAL DATA

Material (process contact)

- Lower stem PEEK, BEIGE (#800140)

Material (without process contact)

- Steel parts AISI 316L (1.4404)
AISI 302 (1.4310)
- O-rings Silicone, RED (#800830)
· EU EC 1935/2004 · FDA CFR 21 §177.2600 · ADI Free
EPDM, BLACK (#800825)
· EU EC 1935/2004 · FDA CFR 21 §177.2600

Surface Treatment

- Outside Electropolished $Ra \leq 1.2 \mu m$

Pressure & Temperature

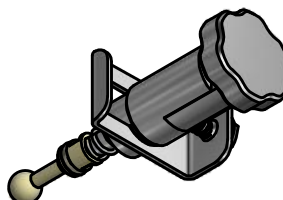
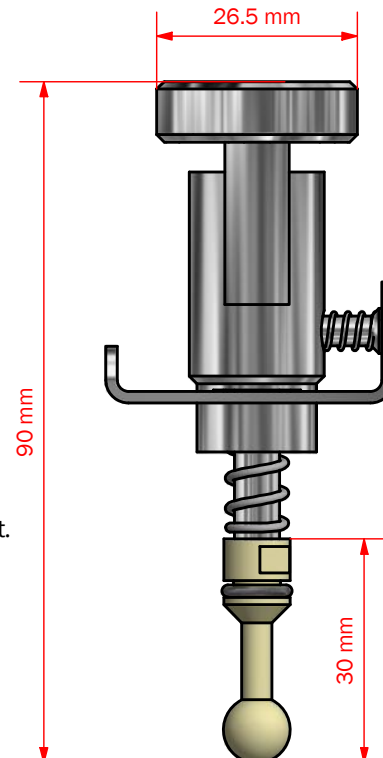
- Pressure $\leq 5 \text{ bar} / 72 \text{ psi}$ (Leakage must be expected to a lesser extent. Please see the Quick Guide for further details.)
- Temperature $1 - 130^\circ C (34 - 266^\circ F)$

Net Weight

- kg/lbs 0.058 kg/0.128 lbs

Spareparts

- 800140 LOWER STEM FOR EMERGENCY TOOL
- 800825 O-RING EPDM 6.10 x 1.60 mm



*For further information and download please visit www.keofitt.dk