

Suitable for 090 serie insert

DESCRIPTION

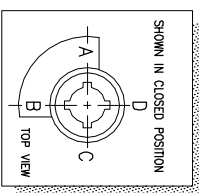
Travel : 90° ±5° At both ends.
 Ratio : 43 : 1
 Turns to close : 10.75
 Weight : 21 kg.(46.2 lb.) Excl.handwheel

MOUNTINGHOLES

Valve connection : F10/F12/F14
 MAX. Bore : ϕ 34 [1.33] or ϕ 40 [1.57]
 Act. connection : F10/F12/F14
 Act. Bore : ϕ 48 [1.89] or ϕ 68 [2.67]

TORQUE

max.OUTPUT : 1450 Nm (12832 lbf.in.)
 max.INPUT : 125 Nm (1105 lbf.in.)
 M.A. : 11.6 ±15%

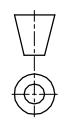


rotork gears

Nijverheidstraat 25
 7135 AS
 The Netherlands

GEARBOX ILG/D 900

THIS DOCUMENT IS PROPERTY OF ROTORK GEARS. NEITHER THIS OR ITS CONTENT MAY BE COPIED OR USED IN ANY OTHER WAY WITHOUT THE WRITTEN PERMISSION OF ROTORK GEARS. ACCEPTANCE OF THIS DOCUMENT SHALL CONSTITUTE ACKNOWLEDGEMENT OF THE FOREGOING CONDITIONS.



Drawn : N.M
 Dwg Nr.: D94N-001

Date : 24-03-2006
 Rev.: 04

Contents Subject to change without notice.